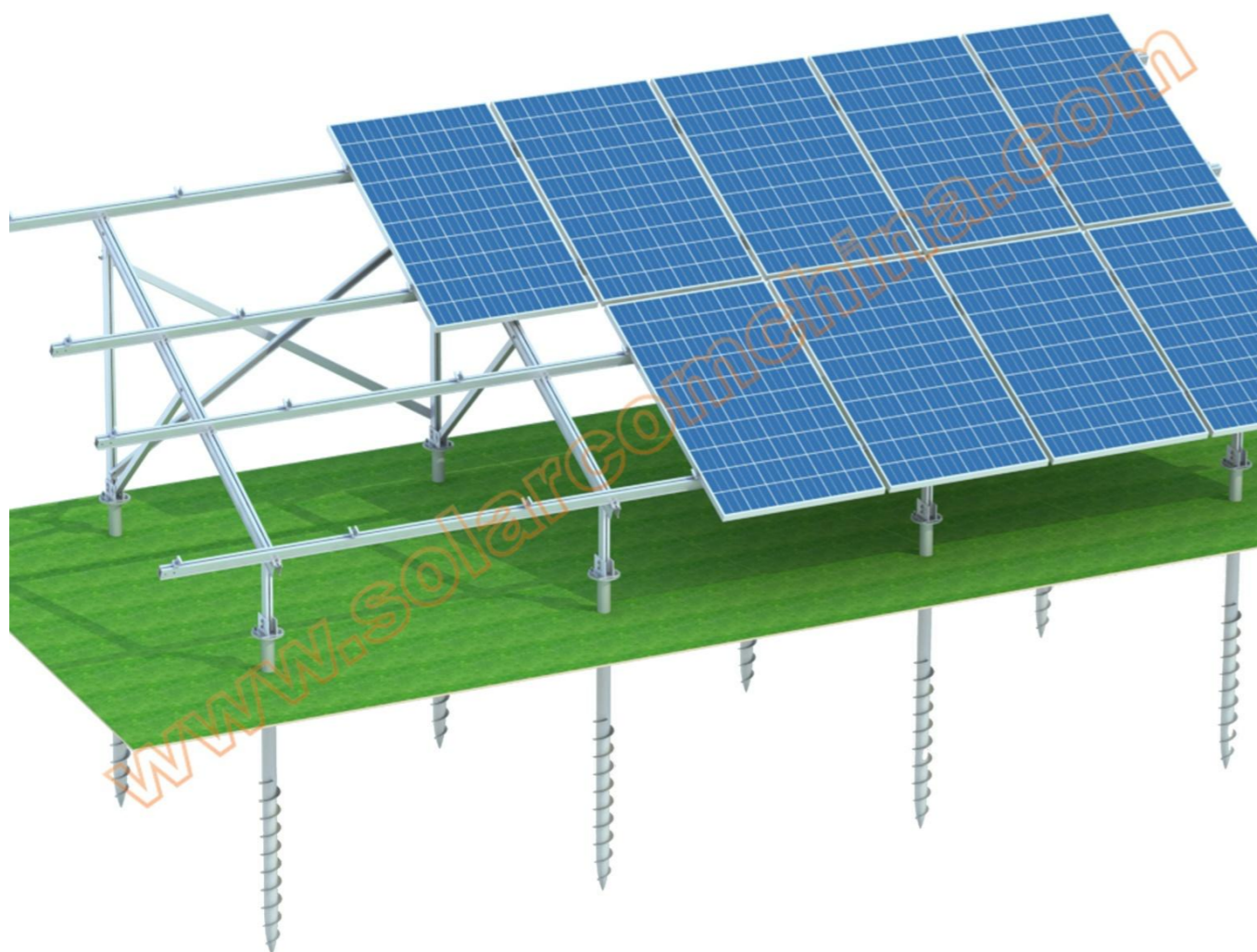
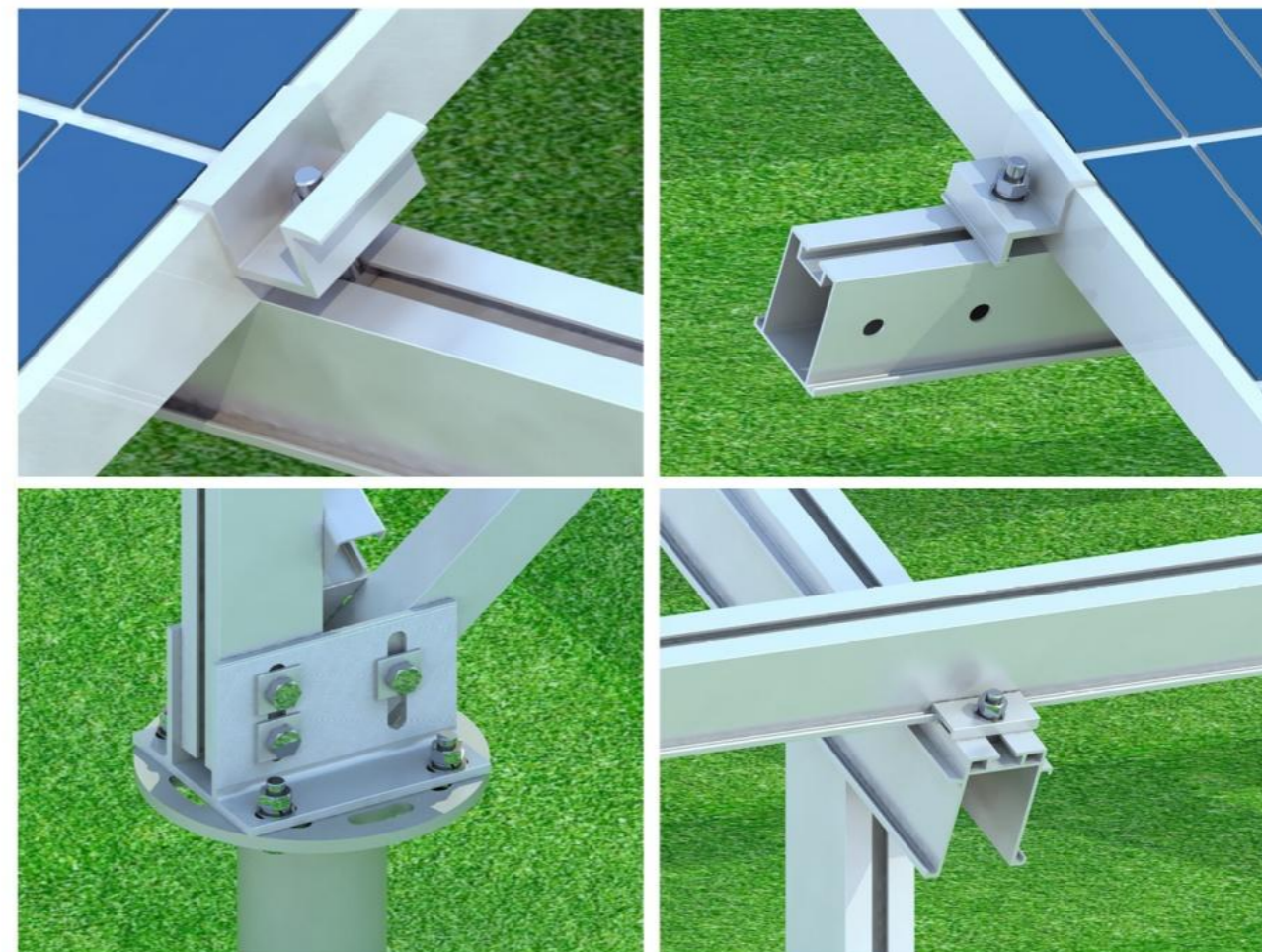


Ground mounting system
---Vertical modules

10
YEARS
WARRANTY

25
YEARS
SERVICE LIFE

SC-VGP1-2 is featured with the module array in portrait. To gain larger module surfaces in horizontal direction means stronger load-bearing profile to resist wind load. According to hydrodynamics and real practices, One of the most proven shemes is 2 verticalmodules in column after comprehensive calculation.



Model NO.	SC-VRC1-2
Design standard:	JIS C 8955:2001 GB 50797-2012 GB 50009-2012 Customized
Wind load:	42m/s
Snow load:	1.4KN/m2
Basement:	Self-weight Pressed block
Tilt Angle:	Adjusted Customized
Panel Orientation:	Landscape/Portrait
Materials:	Al6005-T5/SUS304
Deflector Materials:	SUS304

Your advantages:

- 1. Patent design**
Patent design of the perlin & beam provide robust support to modules.
- 2. Perfect Compatibility**
The system is suitable for both ground screw and concrete foundations.
- 3. Cost control**
Comprehensive structural calculations according to the local environment.